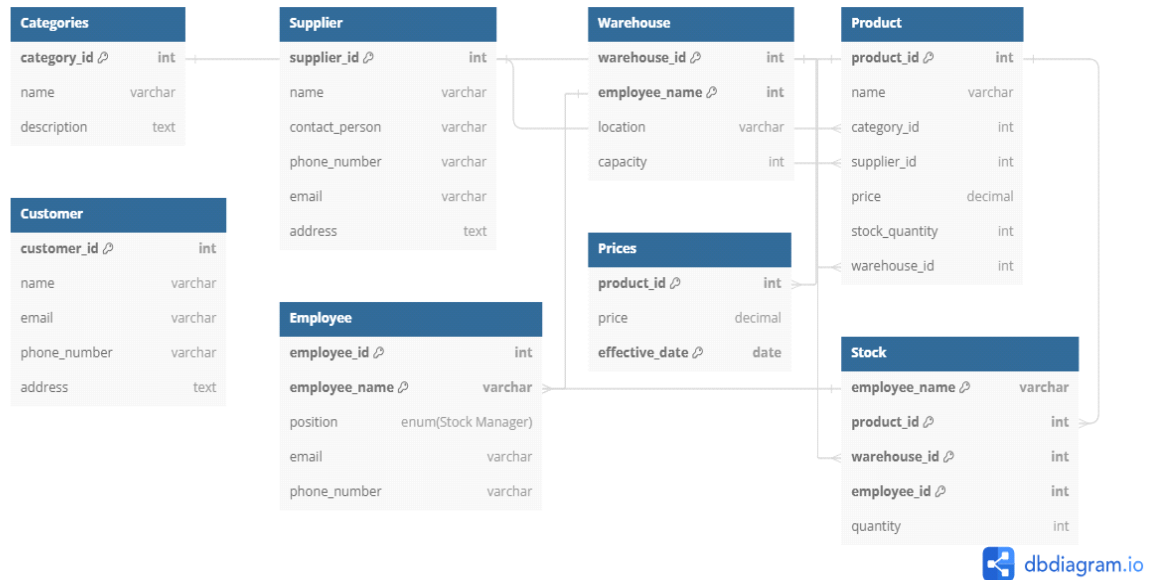


name: mbarushimana danny

Inventory Management System Workflow



Explanations

1. Product Management:

- Product Manager (Employee) adds new products to the inventory using the `Product` class.
- Assign categories, prices, suppliers, and warehouses to the product.

2. Customer Management:

- Customers register on the system using the `Customer` class.
- Customers purchase products, reducing the stock using the `purchaseProduct()` method.

3. Employee Management:

- Admin (Employee) adds and manages employee details using the `Employee` class.
- Employees are assigned roles like Stock Manager, Product Manager, etc., using the `assignRole()` method.

4. Warehouse Management:

- Admin or Warehouse Manager adds and manages warehouses using the `Warehouse` class.

5. Supplier Management:

- Admin or Procurement Manager adds and manages suppliers using the `Supplier` class.

6. Category Management:

- Product Manager adds and manages categories using the `Category` class.

7. Price Management:

- Product Manager sets and updates product prices using the `Price` class.

8. Stock Management:

- Stock Manager adds and updates stock levels using the `Stock` class.
- When customers purchase products, the stock is reduced.